

Introducing the latest entry to the Hand Hole market!



HLD - 243624GY1 Shown

The H Series LIGHT DUTY (HLD) - 24" x 36" x 24" Hand Hole is the most durable option for your Pedestrian Rated infrastructure projects. Weighing in at less than 100 lbs fully assembled, this is one of the most robust Pedestrian Rated products available. Our Made in America product originated in the Midwest and is the culmination of input from installers, distributors and end customers alike.

Lightweight means installer friendly making it safer and faster to set these larger hand holes. Adding custom ports for cable ingress/ egress in the field is safer and easier as well unlike precast and concrete (easier handling; no dust; less tool wear). Our HDPE Pedestrian Rated Lid is 30% lighter than the competition while still meeting the Pedestrian Tier Rating 3,000 lb Test Load requirements.

HTZ SOLUTION FEATURES:

- *HDPE Construction (Lid & Clamshell)*
- *Lightweight (<100 lbs Fully Assembled)*
- *Reversible Clamshell – Prevents Errors when Setting*
- *Unique Snaplock Clamshell Design*
- *Lids available in Gray or Green color*
- *Unique Clip in Anchors for Lid attachment*
- *Outer Grid Prevents Heaving after Installation*
- *Raised lip on clamshell and recess in lid prevent water ingress to unit*

Fasteners can be changed out quickly with our anchor and clip design. We offer option of self tapping or fine threads depending on preference for you application. Changeout is fast and easy.

Our unit has 8 cubic feet (total internal volume) for your splice box and being HDPE walls, items can be fastened in place easily. A, B and most C Splice Boxes easily fit within the unit.

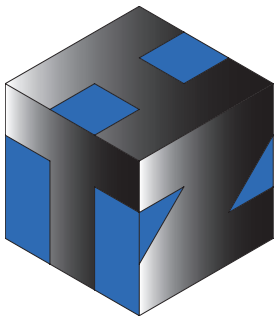
Center Puck - Standard options are Irrigation, Communications or Fiber Optic. Custom Pucks are available with a wide range of customization.



Custom Pucks Available



SCAN TO LEARN MORE



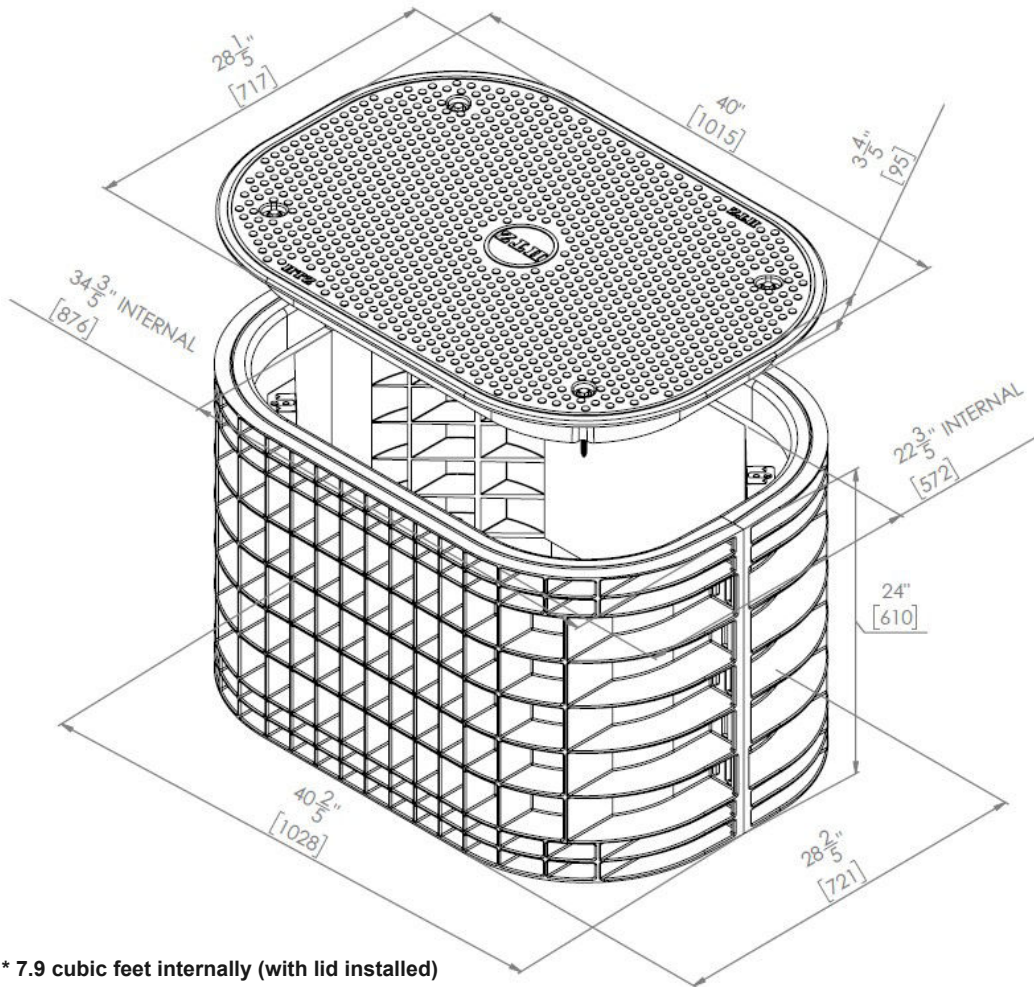
The HTZ Solution!

sales@htzsolutions.com

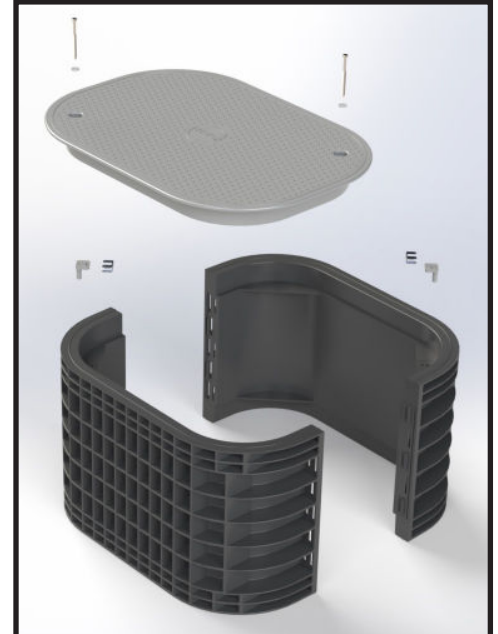
HLD -243624

HTZSolutions.com

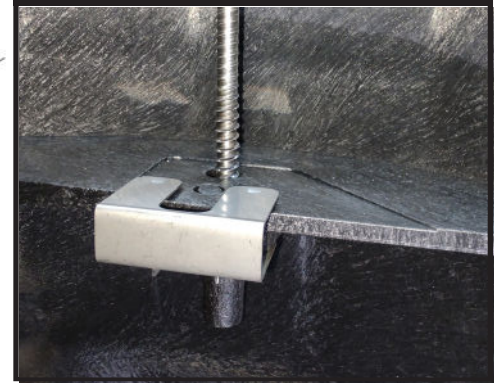
Weight	Lbs	Kg
Lid	32	14.5
Clamshell (Assembled)	64	29.1
Clamshell/ Separated	32	14.5
Fully Assembled	96	43.6



* 7.9 cubic feet internally (with lid installed)



MEETS ANSI SCTE 77 2017 STANDARD
(3,000 lb TEST LOAD REQUIREMENT)



Clip in Anchor System allows for fast and easy changeout.

SHIPPING/ LOGISTICS INFO

TRUCKLOAD QTY	150	
PALLET QTY	6	
FULL PALLET WEIGHT	615	LBS
	279.5	KG



SCAN TO LEARN MORE